



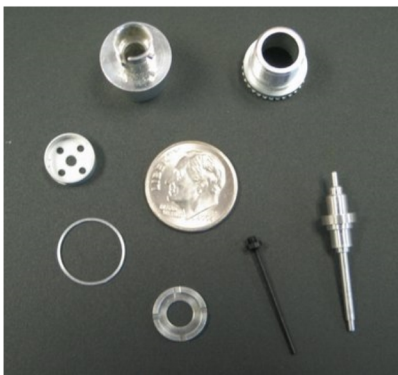
Palladin Precision Machining & Swiss Turning

Dean Palladino
President
57 Bristol Street
Waterbury, CT 06708

Phone: (203) 574-0246
Fax: (203) 756-9478
Email: dean@palladin.com
www.palladin.com



2024 ALUMINIUM



17-4-PH STST



POLYCARBONATE

Palladin is an industry leader in Swiss Precision Turning utilizing Swiss Cam, CNC, Escomatic Turning Lathes, and CNC Milling in a variety of metals and plastics for prototype, pilot, and production manufacturing.

PRODUCT CAPABILITIES

CNC Vertical Milling: 18" x 15" x 10"
Range of Turning: .010" to 1.0"
Turning Length: Up to ~10"
Total Machined Tolerances: +/- .0002"

Materials Used

Aluminum
Brass & Bronze
Carbon & Tool Steel
Other Copper Alloys
Nickel Alloys
Plastics (Teflon, Delrin,
and Polycarbonate)
Stainless Steel
Titanium

PROCESS CAPABILITIES

Primary Operations
CNC Swiss Turning
CNC Vertical Milling
Madaula Thread Whirling
Swiss Cam Automatics
Swiss Coil Fed Machines

Secondary Operations

CNC Omniturn & Futuristic
Chucker Lathes
CNC Drilling, Milling,
Deburring, Knurling, Slotting,
Tapping, & Threading

In-House Finishing Operations

Bead Blasting
Burnishing (Pin/Shaft) To 8 Microfinish
Magnetic Needle Deburring
Tumbling & Vibratory Finishing

OUTSIDE OPERATIONS

Anodizing, & Hard Coat
Black Oxide, Passivate
Centerless Grinding
Electro & Electroless Plating
Electropolish (To 4 Microfinish)
Heat Treating
Other Specialty Coatings &
Surface Treatments

IN-HOUSE MAINTENANCE & TOOL MAKING

Auto-Feed Part Handling
Fixtures to Specification
Innovative Special Tooling
Maintaining & Rebuilding Equipment

QUALITY & CERTIFICATIONS

FAI, FEMA, Control Plans, PPAP
Full Calibration System
ISO 9001 Certified
ITAR Registered
Keyence Vision System
Mitutoyo SurfTest Surface Tester

MARKET EXPERIENCE

Aerospace
Automotive
Battery/Power Generation
Computer/Connector
Electronics
Defense/Firearms/Military
Marine
Medical
Semiconductor/Superconductor
Telecommunications

creating client
& component
connections

Marnee Palladino | *President*
203.217.6433
mpalladino@marninc.com
www.marninc.com

590 Middlebury Road
P.O. Box 1205
Middlebury, CT 06762

